

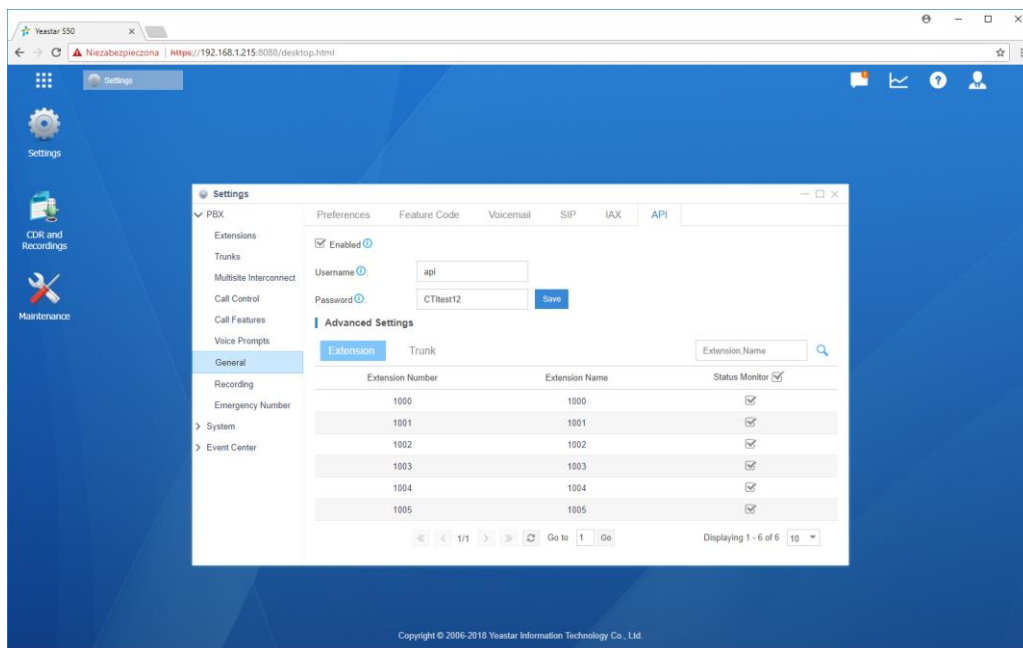
## Configuration procedure for Yeastar S-Series PBX

### Yeastar PBX configuration

It's necessary to enable following protocols:

- Yeastar API

You have to login to your PBX. Then from menu Settings select PBX -> General -> API



Here you have to:

- Click on “Enabled” in API tab
- Set login and password for user authentication
- Click on “Save”

At the end you have to click on “Apply” to load new configuration to PBX.

You will use this created user in Naso CC supervisor configuration of PBX